



# Data.Pro

Torque/Angle Acquisition Software



SCS Concept Group  
Ph. +39 02 925 02 684  
info@scsconcept.com  
www.scsconcept.com  
Data.Pro - Ed. 5 - EN

**SCS Concept Group**

[www.scsconcept.com](http://www.scsconcept.com)

# Data.Pro



Radio connection with **SCS transducers**, for easy **test programming and execution**



➤ The SCS Concept **transducer** is **connected** to the **PC** with **Data.Pro**. The **test** is **programmed** from the **PC** with the following test strategies:

- Power tool
- Pulse tool
- Click wrench
- Dial wrench
- Dial torque/angle wrench

## Features

- Power tool test
- Bluetooth communication with SCS Concept transducers
- Real time results
- Test and traces storage
- Traces view with overlapping function
- User friendly

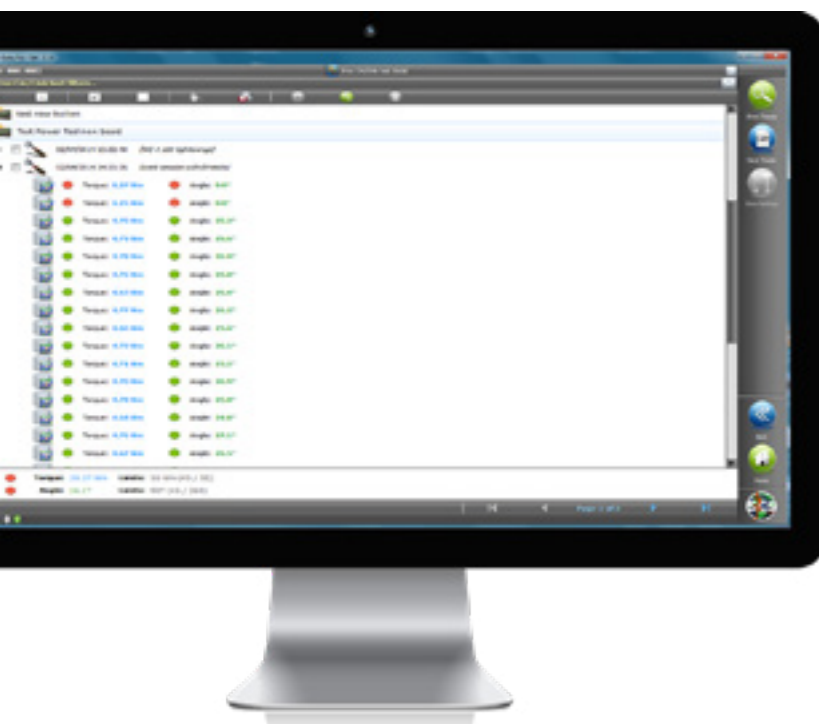
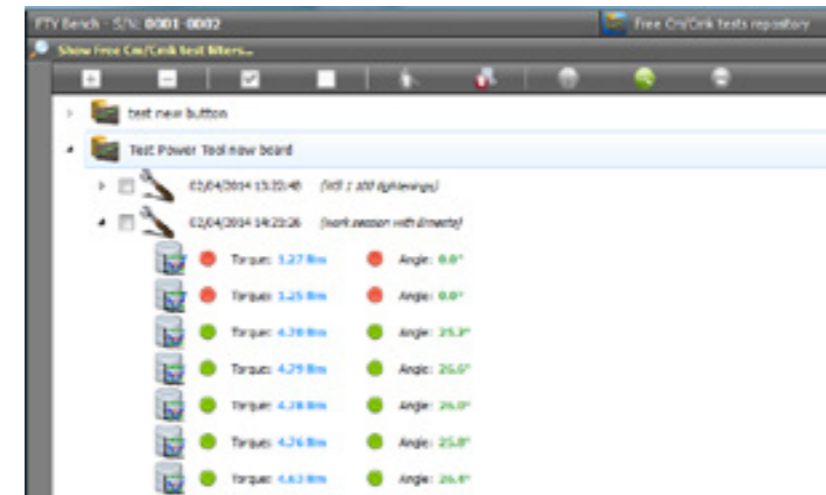
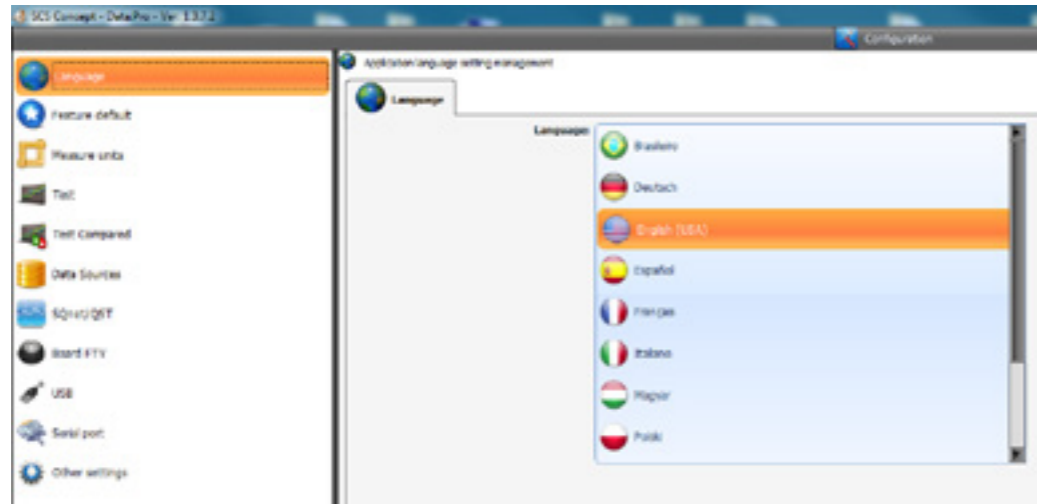
## Benefits

- Cost effective solution

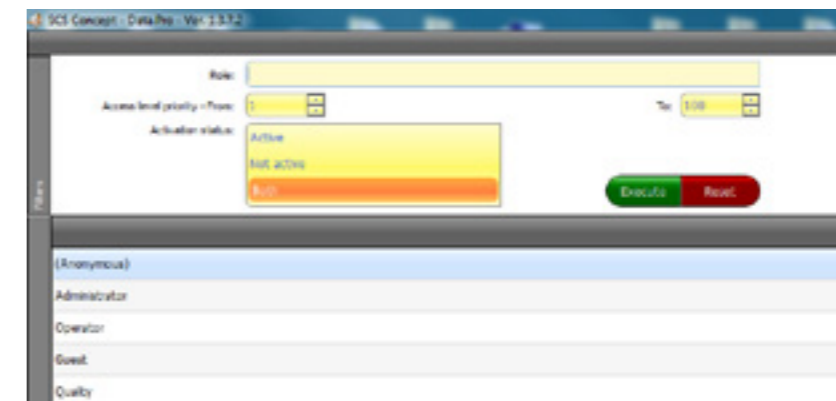
Same software installed on **SCS Concept** benches, for a coordinated product line

➤ **Multilanguage** software with customizable dictionary

➤ **Results and traces archive** on local database



Data.Pro can be installed on any Windows PC



➤ **User management**