

TorqBee HT-Series

Tools with torque and angle transducer

HERMES TOOLS



Premium Power Tools



MADE IN GERMANY



HS-Technik GmbH
High - System - Technik

8 **TorqBee® HT - ECO**

Type designation:: TBxECO-xxx

Programmable Battery-DC-Tool

Torque Reaction Sensor

Optional:

Barcode reader & Wi-Fi

-
- Programmable via USB with HST-Tool-Manager
 - Programmable parameters:
 - Torque
 - Current
 - Angle
 - RPM
 - Time
 - Multi-step programming (6 steps)
 - Handle vibration alarm
 - Multi-colored status LED
 - Intelligent battery management
 - Display of the tightening results
 - OLED display
 - Screw counter
 - Recovery (counter memory function)
 - 100 individual programs
 - Min. 150,000 results incl. tightening curves are saved in the tool
 - Documentation of the date and time of each tightening connection
-

11 **TorqBee® HT - EC**

Type designation:: TBxEC-xxx

Programmable Battery-DC-Tool

Rotating Torque Transducer and Angle Encoder

Optional:

Barcode reader & Wi-Fi

-
- Programmable via USB with HST-Tool-Manager
 - Programmable parameters:
 - Torque
 - Current
 - Angle (encoder)
 - RPM
 - Time
 - Multi-step programming (6 steps)
 - Handle vibration alarm
 - Multi-colored status LED
 - Intelligent battery management
 - Display of the tightening results
 - OLED display
 - Screw counter
 - Recovery (counter memory function)
 - 100 individual programs
 - Min. 150,000 results incl. tightening curves are saved in the tool
 - The highest sensor precision on the market, torque transducer: < 1 % full scale
angle resolution: 0.1 °
 - Documentation of the date and time of each tightening connection
-

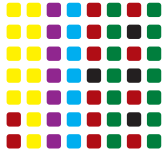
TotqBee® HT-Series

Features



OLED Display

Visualization of tightening results and tool status.



Multicolor LED control light

Individually programmable!



Intelligent battery management

Battery level indicator and effective protection against the Li-Ion battery deep discharging.



Software HST-Tool-Manager

Intuitive and quick programming of HS-Technik power tools.



Handle vibration alarm

NOK status



Job / Sequence

Allows for sequences to be processed without additional controller.



Optional barcode reader integrated into the tool

Barcodes with up to 64 characters can be read and processed.



Optional Wi-Fi for data transmission

Connection to HST Controller.



03 / 05

Recovery (counter memory function)

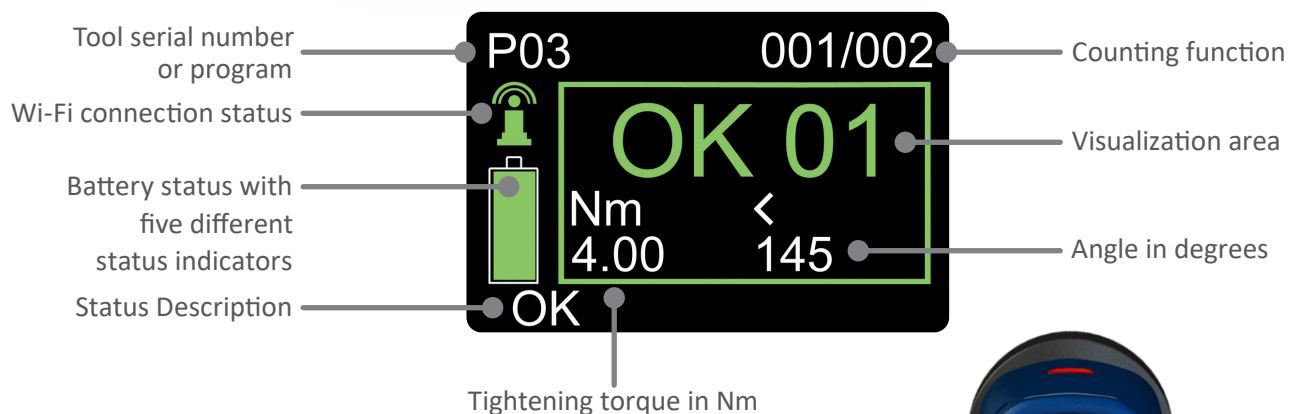
Status memory for the screw counter when changing the battery.

TorqBee® HT-Series

Overview

| TorqBee® Features | HT-ECO | HT-EC |
|--|--------|---------|
| Multicolor LED control light | • | • |
| Intelligent battery management | • | • |
| HST-Tool-Manager programming software | • | • |
| Handle vibration alarm | • | • |
| OLED display | • | • |
| Counting function for screws | • | • |
| Job / Sequence | • | • |
| Optional barcode reader | • | • |
| Optional Wi-Fi | • | • |
| Rotating torque transducer and angle encoder | | • |
| Torque reaction sensor | • | |
| Further information | Page 8 | Page 11 |

OLED-Display

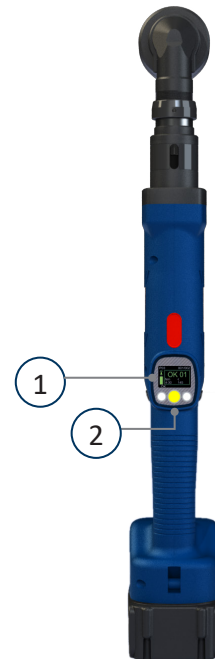
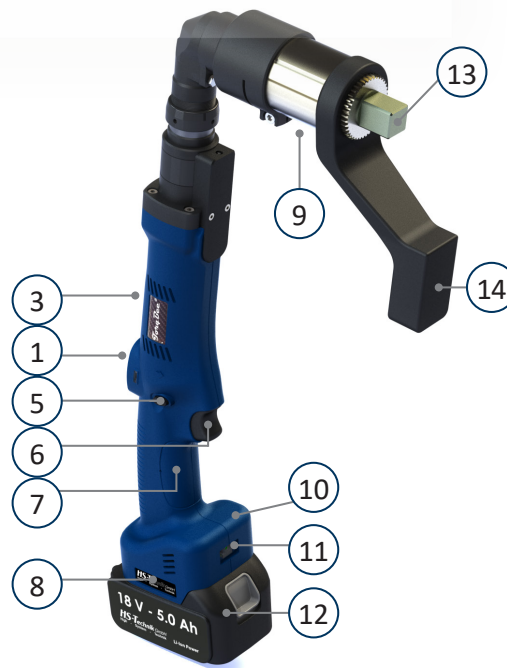
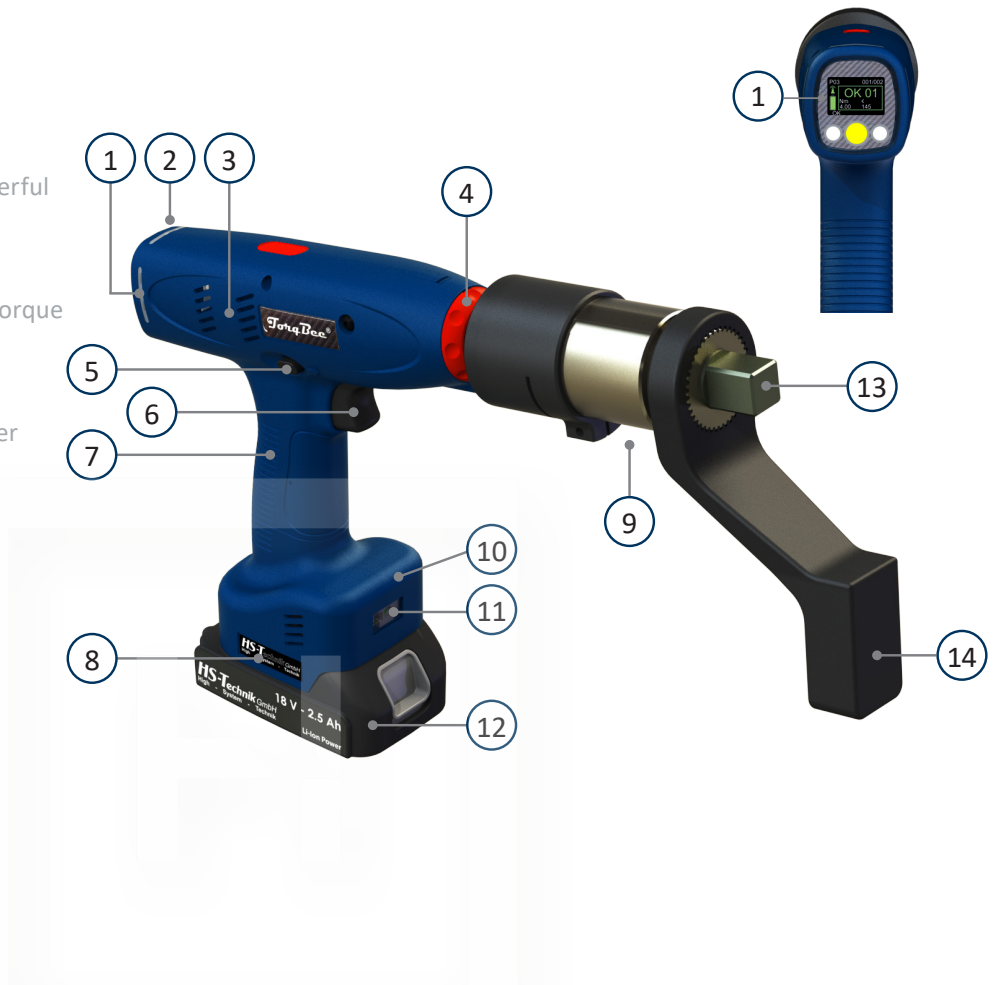


The display on the TorqBee® was developed so the operator is intuitively guided through the process steps and can view the quality of the screw connection at any time.

TorqBee® HT-Series with Norbar Multiplier

Overview

- 1 **OLED display to guide operator**
- 2 **Multi-colored LED indicator**
Tool status information for operator.
LED visible from all angles.
- 3 **Brushless motor**
for a higher idle speed and faster, powerful working capacity, maintenance-free
- 4 **Color index**
easy machine and area of application torque assignment
- 5 **Clockwise/counterclockwise rotation**
perfect operation thanks to push trigger
- 6 **Large start trigger**
ergonomic form
- 7 **Ergonomic handle**
to better guide the tool
incl. handle vibration alarm
- 8 **USB port**
Can be programmed for your specific application
- 9 **High precision torque multiplier**
- 10 **Optional Wi-Fi**
Wi-Fi 2.4 & 5 GHz
- 11 **Optional barcode reader**
- 12 **Premium Li-Ion battery**
18 Volt, 2.5 Ah / 5.0 Ah
- 13 **3/4" square drive**
- 14 **Torque reaction arm***

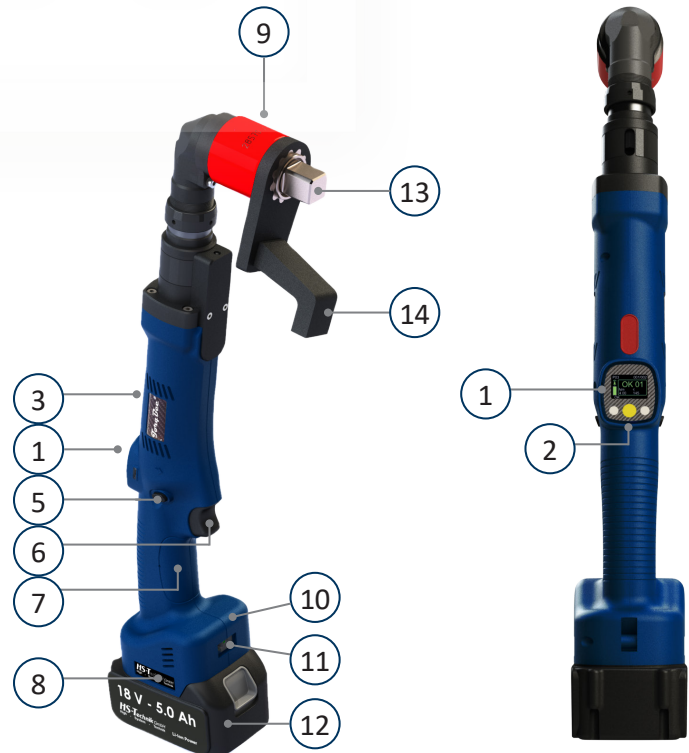
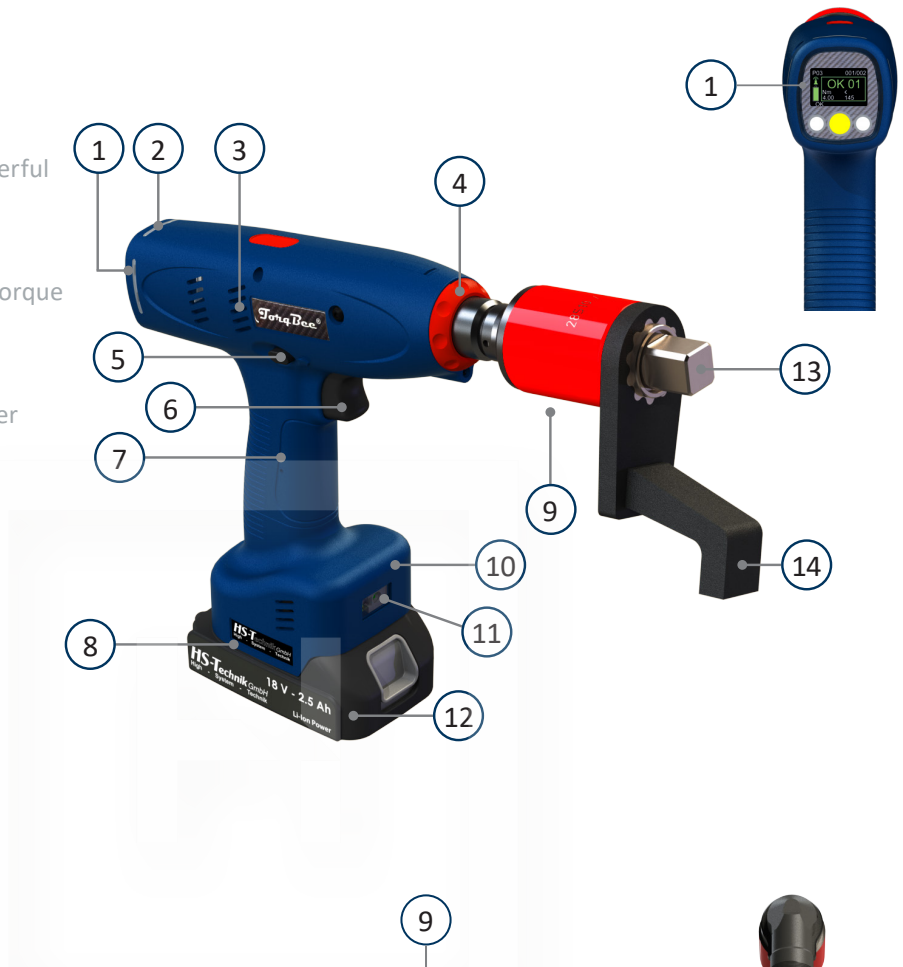


*Torque reaction arm incl. with Norbar, not included with RAD

TotqBee® HT-Series with RAD Multiplier

Overview

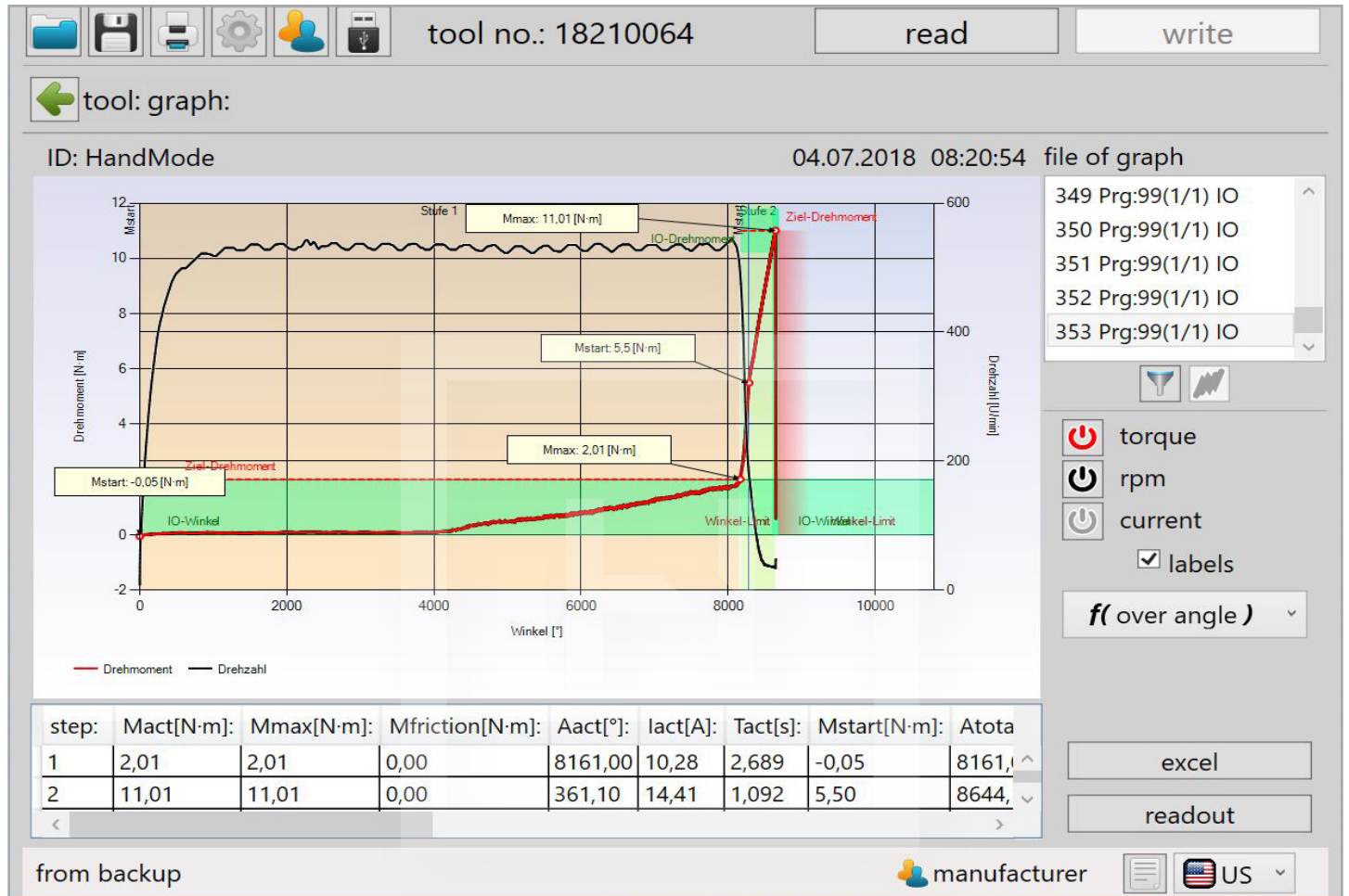
- 1 **OLED display to guide operator**
- 2 **Multi-colored LED indicator**
Tool status information for operator.
LED visible from all angles.
- 3 **Brushless motor**
for a higher idle speed and faster, powerful working capacity, maintenance-free
- 4 **Color index**
easy machine and area of application torque assignment
- 5 **Clockwise/counterclockwise rotation**
perfect operation thanks to push trigger
- 6 **Large start trigger**
ergonomic form
- 7 **Ergonomic handle**
to better guide the tool
incl. handle vibration alarm
- 8 **USB port**
Can be programmed for your specific application
- 9 **High precision torque multiplier**
- 10 **Optional Wi-Fi**
Wi-Fi 2.4 & 5 GHz
- 11 **Optional barcode reader**
- 12 **Premium Li-Ion battery**
18 Volt, 2.5 Ah / 5.0 Ah
- 13 **3/4" square drive**
- 14 **Torque reaction arm***



*Torque reaction arm incl. with Norbar, not included with RAD

Tools from the EC series are excellently suited for joint analysis.

The torque / angle curve is recorded directly in the tool, without additional hardware and can be exported to Microsoft® Excel for additional analysis and reports.



TotqBee® HT-ECO-Series

Programmable Tool with torque transducer

- **Torque transducer**
- **Torque accuracy**
≤ +/- 7 % Cm > 2,00 | Cmk > 1,67
- **6-step programmability**
 - Torque
 - Current
 - Angle
 - Speed
 - Time
- **Handle vibration alarm**
- **Multi-colored LED indicator, visible from all angles**
- **Intelligent battery management**
- **Brushless, high-power motor**
- **Display of the tightening results**
- **Brake energy recovery extends the battery life**
- **Maximum ergonomics**
- **Updates can be installed via USB**
- **OLED display**
- **Screw counter**
- **Counter memory function**
- **100 individual programs**
- **Min. 150,000 tightening results incl. torque and angle curve are stored in the tool**
- **OK/NOK evaluation of the shut-off result**
- **All common tightening strategies can be programmed**
- **Optional: Barcode reader & Wi-Fi**

For further information on the programming software, please visit our website.



Torque transducer for the highest level of precision.
Suitable for class A, B & C joints.

TotqBee® HT-ECO-Series

Programmable Tool with torque transducer



| Pistol Tool | Torque | Speed | Multiplier | Tool adapter | Dimensions L × B × H | Weight |
|---------------------|---------------|------------------|------------|---------------|----------------------|---------|
| TBPECO-150* | 50 - 150 Nm | 4.0 - 40.0 U/min | RAD | 3/4" - square | 312 × 72 × 211 mm | 1.80 kg |
| TBPECO-300* | 90 - 300 Nm | 2.0 - 20.0 U/min | RAD | 3/4" - square | 312 × 72 × 211 mm | 1.80 kg |
| TBPECO-525* | 165 - 525 Nm | 1.0 - 10.0 U/min | RAD | 3/4" - square | 326 × 72 × 211 mm | 2.20 kg |
| TBPECO-645* | 200 - 645 Nm | 0.7 - 7.0 U/min | RAD | 3/4" - square | 365 × 72 × 250 mm | 3.20 kg |
| TBPECO-1250* | 400 - 1250 Nm | 0.4 - 4.0 U/min | RAD | 3/4" - square | 365 × 72 × 250 mm | 3.20 kg |

*
W = Wi-Fi option
B = Barcode reader option
WB = Wi-Fi & barcode reader option

The tools must be used with suitable torque reaction arm only!
Torque reaction arm not included in scope of delivery, find reaction arms on page 14.
Dimensions and weight indications without battery.



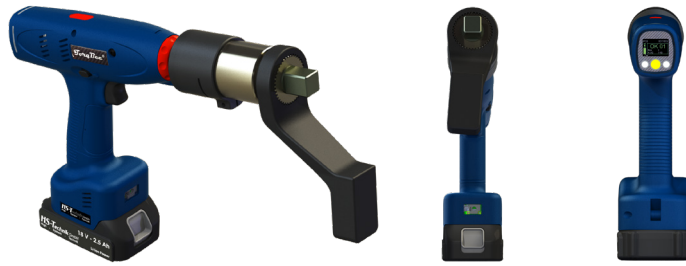
| Angle Tool | Torque | Speed | Multiplier | Tool adapter | Dimensions L × B × H | Weight |
|---------------------|---------------|------------------|------------|---------------|----------------------|---------|
| TBAECO-190* | 60 - 190 Nm | 4.0 - 40.0 U/min | RAD | 3/4" - square | 474 × 72 × 132 mm | 2.24 kg |
| TBAECO-380* | 120 - 380 Nm | 2.0 - 20.0 U/min | RAD | 3/4" - square | 474 × 72 × 146 mm | 2.53 kg |
| TBAECO-675* | 220 - 675 Nm | 1.0 - 10.0 U/min | RAD | 3/4" - square | 474 × 72 × 146 mm | 2.53 kg |
| TBAECO-830* | 260 - 830 Nm | 0.7 - 7.0 U/min | RAD | 3/4" - square | 482 × 72 × 185 mm | 3.90 kg |
| TBAECO-1250* | 500 - 1250 Nm | 0.4 - 4.0 U/min | RAD | 3/4" - square | 482 × 72 × 185 mm | 3.90 kg |

*
W = Wi-Fi option
B = Barcode reader option
WB = Wi-Fi & barcode reader option

The tools must be used with suitable torque reaction arm only!
Torque reaction arm not included in scope of delivery, find reaction arms on page 14.
Dimensions and weight indications without battery.

TotqBee® HT-ECO-Series

Programmable Tool with torque transducer



| Pistol Tool | Torque | Speed | Multiplier | Tool adapter | Dimensions L x B x H | Weight |
|-------------|-------------|------------------|------------|---------------|----------------------|---------|
| TBPECO-250* | 65 - 250 Nm | 2.0 - 20.0 U/min | Norbar | 3/4" - square | 380 x 72 x 215 mm | 3.75 kg |

*

W = Wi-Fi option

B = Barcode reader option

WB = Wi-Fi & barcode reader option

The tools must be used with suitable torque reaction arm only!
Dimensions and weight indications without battery.



| Angle Tool | Torque | Speed | Multiplier | Tool adapter | Dimensions L x B x H | Weight |
|--------------|--------------|------------------|------------|---------------|----------------------|---------|
| TBAECO-500* | 180- 500 Nm | 1.0 - 10.0 U/min | Norbar | 3/4" - square | 520 x 72 x 238 mm | 4.80 kg |
| TBAECO-1000* | 300- 1000 Nm | 0.5 - 5.0 U/min | Norbar | 3/4" - square | 585 x 72 x 241 mm | 5.20 kg |

*

W = Wi-Fi option

B = Barcode reader option

WB = Wi-Fi & barcode reader option

The tools must be used with suitable torque reaction arm only!
Dimensions and weight indications without battery.

TotqBee® HT-EC-Series

Programmable DC-tool with torque transducer and angle encoder

- **rotating torque transducer and angle encoder**
- **Torque accuracy**
≤ +/- 2,5 %
- **6-step programmability**
 - Torque
 - Current
 - Angle
 - Speed
 - Time
- **Handle vibration alarm**
- **Multi-colored LED indicator, visible from all angles**
- **Intelligent battery management**
- **Brushless, high-power motor**
- **Display of the tightening results**
- **Brake energy recovery extends the battery life**
- **Maximum ergonomics**
- **Updates can be installed via USB**
- **OLED display**
- **Screw counter**
- **Counter memory function**
- **100 individual programs**
- **Min. 150,000 tightening results incl. torque and angle curve are stored in the tool**
- **OK/NOK evaluation of the shut-off result**
- **All common tightening strategies can be programmed**
- **Optional: Barcode reader & Wi-Fi**

For further information on the programming software, please visit our website.



TotqBee® HT-EC-Serie – Benefits in comparison to the tools on the previous pages

- Rotating torque transducer and angle encoder for the highest level of precision.
- Highest level of precision even when running counterclockwise
- Suitable for class A, B & C joints.

TotqBee® HT-EC-Series

Programmable DC-tool with torque transducer and angle encoder



| Pistol Tool | Torque | Speed | Multiplier | Tool adapter | Dimensions L × W × H | Weight |
|--------------------|---------------|------------------|------------|---------------|----------------------|---------|
| TBPEC-150* | 50 - 150 Nm | 4.0 - 40.0 U/min | RAD | 3/4" - square | 312 × 72 × 211 mm | 1.90 kg |
| TBPEC-300* | 90 - 300 Nm | 2.0 - 20.0 U/min | RAD | 3/4" - square | 312 × 72 × 211 mm | 1.90 kg |
| TBPEC-525* | 165 - 525 Nm | 1.0 - 10.0 U/min | RAD | 3/4" - square | 326 × 72 × 211 mm | 2.30 kg |
| TBPEC-645* | 200 - 645 Nm | 0.7 - 7.0 U/min | RAD | 3/4" - square | 365 × 72 × 250 mm | 3.30 kg |
| TBPEC-1250* | 400 - 1250 Nm | 0.4 - 4.0 U/min | RAD | 3/4" - square | 365 × 72 × 250 mm | 3.30 kg |

*
W = Wi-Fi option
B = Barcode reader option
WB = Wi-Fi & barcode reader option

The tools must be used with suitable torque reaction arm only!
Torque reaction arm not included in scope of delivery, find reaction arms on page 14.
Dimensions and weight indications without battery.



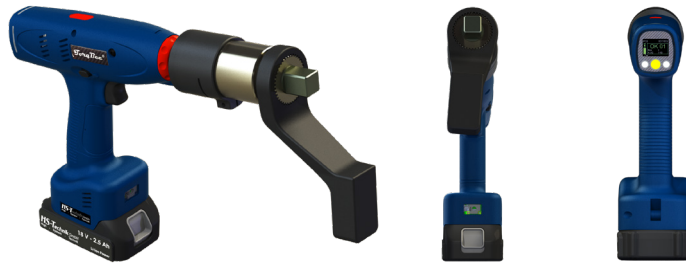
| Angle Tool | Torque | Speed | Multiplier | Tool adapter | Dimensions L × W × H | Weight |
|--------------------|---------------|------------------|------------|---------------|----------------------|---------|
| TBAEC-190* | 60 - 190 Nm | 4.0 - 40.0 U/min | RAD | 3/4" - square | 474 × 72 × 132 mm | 2.24 kg |
| TBAEC-380* | 120 - 380 Nm | 2.0 - 20.0 U/min | RAD | 3/4" - square | 474 × 72 × 146 mm | 2.53 kg |
| TBAEC-675* | 220 - 675 Nm | 1.0 - 10.0 U/min | RAD | 3/4" - square | 474 × 72 × 146 mm | 2.53 kg |
| TBAEC-830* | 260 - 830 Nm | 0.70 - 7.0 U/min | RAD | 3/4" - square | 482 × 72 × 185 mm | 3.90 kg |
| TBAEC-1250* | 500 - 1250 Nm | 0.40 - 4.0 U/min | RAD | 3/4" - square | 482 × 72 × 182 mm | 3.90 kg |

*
W = Wi-Fi option
B = Barcode reader option
WB = Wi-Fi & barcode reader option

The tools must be used with suitable torque reaction arm only!
Torque reaction arm not included in scope of delivery, find reaction arms on page 14.
Dimensions and weight indications without battery.

TotqBee® HT-EC-Series

Programmable DC-tool with torque transducer and angle encoder



| Pistol Tool | Torque | Speed | Multiplier | Tool adapter | Dimensions L x W x H | Weight |
|-------------|-------------|------------------|------------|-----------------|----------------------|---------|
| TBPEC-250* | 65 - 250 Nm | 2.0 - 20.0 U/min | Norbar | 3/4" - Vierkant | 380 x 72 x 215 mm | 3.75 kg |

*

W = Wi-Fi option

B = Barcode reader option

WB = Wi-Fi & barcode reader option

The tools must be used with suitable torque reaction arm only!
Dimensions and weight indications without battery.



| Angle Tool | Torque | Speed | Multiplier | Tool adapter | Dimensions L x W x H | Weight |
|-------------|--------------|------------------|------------|---------------|----------------------|---------|
| TBAEC-500* | 180- 500 Nm | 1.0 - 10.0 U/min | Norbar | 3/4" - square | 520 x 72 x 238 mm | 4.80 kg |
| TBAEC-1000* | 300- 1000 Nm | 0.5 - 5.0 U/min | Norbar | 3/4" - square | 585 x 72 x 241 mm | 5.20 kg |

*

W = Wi-Fi option

B = Barcode reader option

WB = Wi-Fi & barcode reader option

The tools must be used with suitable torque reaction arm only!
Dimensions and weight indications without battery.

TotqBee® HT-EC/-ECO-Series Accessories

Reaction Arm for RAD-Multiplier

| Order no. | description |
|-----------|-------------|
|-----------|-------------|

| | |
|-------|-----------------------|
| 28760 | Standard Reaction Arm |
|-------|-----------------------|



| Order no. | description |
|-----------|-------------|
|-----------|-------------|

| | |
|-------|--------------------|
| 28771 | short Reaction Arm |
|-------|--------------------|



| Order no. | description |
|-----------|-------------|
|-----------|-------------|

| | |
|-------|-------------------------|
| 28773 | adjustable Reaction Arm |
|-------|-------------------------|



TotqBee® HT-EC/-ECO-Series Accessories

Reaction Arm for Norbar-Multiplier

Order no. **description**

030000383 Standard Reaction Arm



Order no. **description**

030000451 one-sided Reaction Arm



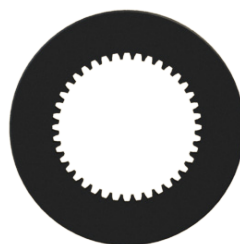
Order no. **description**

030000452 double-sided Reaction Arm



Order no. **description**

030000384 welding ring



TotqBee® HT-Series Accessories

Hanging Assembly

| Order no. | Suitable for TBAECO- |
|-----------|----------------------|
| HST-3618 | TBAECO-190* |
| | TBAECO-380* |
| | TBAECO-675* |
| | TBAECO-830* |
| | TBAECO-1250* |
| | TBAECO-500* |
| | TBAECO-1000* |



HST-3618
Rotating hanging assembly
for ECO-Tools



HST-3618

*
W = Wi-Fi option
B = Barcode reader option
WB = Wi-Fi & barcode reader option

| Order no. | Suitable for TBAEC- |
|-------------|---------------------|
| HST-3580 | TBAEC-190* |
| | TBAEC-380 |
| | TBAEC-675* |
| | TBAEC-830* |
| | TBAEC-1250* |
| | TBAEC-500* |
| TBAEC-1000* | |



HST-3580
Rotating hanging assembly
for EC-Tools



HST-3580

*
W = Wi-Fi option
B = Barcode reader option
WB = Wi-Fi & barcode reader option

| Order no. | Suitable for TBP- |
|-----------|-------------------|
| PRIV-B8 | TBP-150* |
| | TBP-300* |
| | TBP-525* |
| | TBP-645* |
| | TBP-1250* |
| | TBP-250* |
| | TBP-150* |
| | TBP-300* |
| | TBP-525* |
| | TBP-645* |
| | TBP-1250* |
| TBP-250* | |



PRIV-B8



PRIV-B8

*
W = Wi-Fi option
B = Barcode reader option
WB = Wi-Fi & barcode reader option

TorqBee® HT-Series Accessories

Battery and charger

Battery

| | |
|------------------|---|
| Order no. | HST-PR-1850 |
| Voltage | 18 V |
| Capacity | 5.0 Ah |
| Compatible with | TorqBee-series, NutBee-series, RivBee-series and more |
| Weight | 600 g |



HST-PR-1850

Battery cover

| | |
|------------------|-----------------------------|
| Order no. | Suitable for battery |
| Cover-1850 | HST-PR-1850 |



Cover-1850

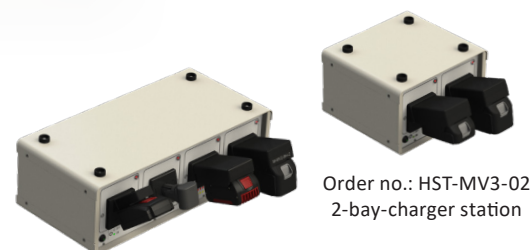
HST-PR-2830 (Single charger)

| | |
|----------------------|---|
| Order no. | HST-PR-2830 / HST-PR-2830-USA |
| Input | 220 - 240 V AC, 50 - 60 Hz / 110 V AC, 50 - 60 Hz |
| Charging current | 3 A |
| Output | max. 21 V |
| Charging time | max. 55 min with 2.5 Ah battery |
| Shut-off criteria | ΔU, temperature shut-off |
| Weight | approx. 550 g |
| Dimensions W × H × D | ca. 85 × 110 × 155 mm |



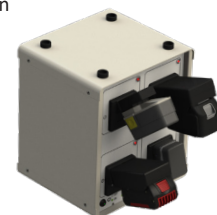
HST-MV3 (Multi-bay-charger)

| | | |
|--|--|--------------------|
| Order no. | HST-MV3-02 / HST-MV3-04 / HST-MV3-04W | |
| Input | 85 - 260 V AC, 47 - 63 Hz | |
| Power output | max. 624 W | |
| Efficiency | > 89 % | |
| Output | 56 V / 624 VA | |
| Power supply ventilator | demand actuated (depending on temperature) | |
| Weight | HST-MV3-02 | ca. 4,7 kg |
| | HST-MV3-04 | ca. 7,6 kg (Row) |
| | HST-MV3-04W | ca. 7,6 kg (Cube) |
| Dimensions W × H × D without battery adapter, incl. feet | HST-MV3-02 | 289 × 182 × 260 mm |
| | HST-MV3-04 | 539 × 182 × 260 mm |
| | HST-MV3-04W | 289 × 330 × 260 mm |
| conformity | CE | |
| Tested | FC | |



Order no.: HST-MV3-02
2-bay-charger station

Order no.: HST-MV3-04
4-bay-charger station
row form



Order-no.: HST-MV3-04W
4-bay-charger station
cube form

TotqBee® HT-Series Accessories

Battery adapter for MV3 Multi-bay-charger

The specifications of the battery cell manufacturers and the specifications of the battery pack from each manufacturer are taken into account in the charging process.

| Order no. | For battery types | |
|-------------|--|--|
| M-MV3-PR | HS-Technik HST-PR | 14.4 & 18 V Li-Ion |
| M-MV3-BH | Makita Makstar (BL) Makita Makstar (BH) HST-BL HST-BH | 14.4 & 18 V Li-Ion 9.6 - 24 V Ni-MH 14.4 & 18 V Li-Ion 9.6 - 24 V Ni-MH |
| M-MV3-BO-LI | Bosch | 14.4 & 18 V Li-Ion |
| M-MV3-BO-10 | Bosch | 10.8 V Li-Ion |
| M-MV3-BO-NI | Bosch | 7.2 - 18 V Ni-Cd & Ni-MH |
| M-MV3-FEIN | Fein ASM / ASW | 10.8 / 14.4 / 18 V Li-Ion |
| M-MV3-CPN | Atlas Copco Desoutter | 18 & 36 V Li-Ion (before 2021 3-pole batteries) 18 & 36 V Li-Ion (before 2021 3-pole batteries) |
| M-MV3-Cleco | Apex Cleco Power Tools | 26 & 44 V Li-Ion |
| M-MV3-AC30 | Atlas Copco | 18 & 30 V Li-Ion |
| M-MV3-UNI | Makita Bosch Gesipa Gesipa | 7.2 - 24 V Ni-Cd & Ni-MH 7.2 - 18 V Ni-Cd & Ni-MH 12 V Ni-Cd & Ni-MH 14.4 V Li-Ion |
| M-MV3-GE | Gesipa | 18 V Li-Ion |
| M-MV3-PA-36 | Panasonic | 3.6 V Li-Ion |
| M-MV3-PA-LI | Panasonic | 10.8 / 14.4 / 18 V Li-Ion |
| M-MV3-PA-72 | Panasonic | 7.2 V Li-Ion |
| M-MV3-IR | Ingersoll Rand | 20 & 40 V Li-Ion |
| M-MV3-SCS | SCS | 3.6 V |
| M-MV3-DES | Desoutter | 18 & 36 V Li-Ion (since 2021 with electronic) |

Example pictures:



M-MV3-PR



M-MV3-BH



M-MV3-BO-LI



M-MV3-BO-10



M-MV3-FEIN



M-MV3-CPN



M-MV3-UNI



M-MV3-PA-LI



M-MV3-PA-36

If you require battery adapters for older charging stations, please contact us.
Additional battery adapters upon request.



HS-Ttechnik GmbH

High - System - Technik

Im Martelacker 12
D-79588 Efringen-Kirchen
Telephone: +49 (0) 76 28 - 91 11-0
Fax: +49 (0) 76 28 - 91 11-90
E-mail: info@hs-technik.com
Internet: www.hs-technik.com

© Copyright June 2021

Subject to modifications and errors. All figures are non-binding.

We reserve the right to make technical changes to our products and the range of products as a result of further development.
Reproduction and the use of texts, even excerpts of our brochures is prohibited and will be prosecuted.